

The Chronicle

February 2023 Issue 433

Aston Abbotts Allotments Targeted Again



Once again the allotments in Aston Abbotts have been targeted by thieves. At least six sheds were broken into and a number of items stolen. This occurred between 4pm on Saturday 7th January and 8am Sunday 8th

Items from machinery to bird seed were stolen.

The thieves chose a wet and very windy day to take other people's belongings which was upsetting and frustrating

to the owners. However one allotmenteer raised some smiles when he reported that his piece of heavy but useless machinery he had been meaning to take to the dump for some time was taken.

If anyone saw anything suspicious between these times on or near to the allotments, please contact Simon Guy:

simonrguy@hotmail.co.uk

Aston Abbots Bell ringers who rang in the new year.

Compliments of Michael Gould

The bell ringers were Peter Knight, Alex Radbourne, Kate Curry, Tom & Sarah Phillips. Caroline Lane, Jill Wemble, Sondra Richman. Others present Gordon Lane, Mike Wemble



From the Editor

Heavy goods vehicles levy

From August 2023, all HGVs weighing more than 12 tonnes will pay a levy to cover for damage done to the roads.

This must not stop our opposition to having HGVs on our village roads. Please continue to write, email or call the companies who abuse our village. It's certainly working.

True local murder stories.

I've been asked to repeat this blood curdling series of true Buckinghamshire stories for people who missed them previously and for new residents to the village.

I included one last month and one this month. These two were new to me so I have printed them for the first time.

Don't forget our own Bus Stop Library. A small collection of literary treasures spanning about every genre of reading. Come and add or swap books. (Bus shelter on The Green by the postbox)

The Pop up Pub in January was another success. We are looking at

making the Village Quiz Nights or the Pop up Pub night a curry night too. We can also play music in the hall with the much improved acoustics.

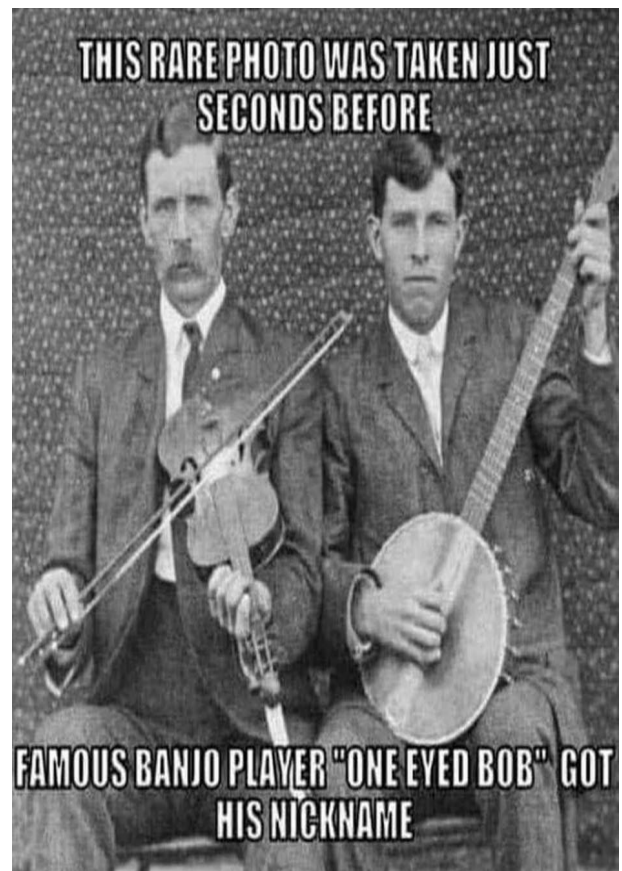
Tables are being reserved for the Quiz Night on Saturday 4th February. So get in there before they are gone. 07544227991.

And don't forget the Church Quiz Night on Saturday 4th March.

Take care

Pete Lucas

Editor



Villagers Quiz Night

Saturday 4th February

7.30pm

Aston Abbotts Village Hall

Two + hours of fun from

Cash Prize plus others (Play your cards right)

Bring your own booze / drinks

Snacks on tables

Tickets £3 per person

***Maximum of 6 to a team. Join the fun on a
cheap night out***

Further Information from Pete 07544227991

Other Activities & What's on Guide:

Women's club (Gnomes) Contact Carol 681544

Men's pub Get group. (630 club) Contact Andy 681690

Book Club Contact Sally 681152

What's on in Aston Abbotts in February

<i>Coffee Shop</i>	<i>Village Hall</i>	<i>Thursdays 10-11.30</i>
<i>Village Quiz Night</i>	<i>Village Hall</i>	<i>Saturday 4th 19.30</i>
<i>Whist Club</i>	<i>Village Hall</i>	<i>Thursday 2nd & 16th. 19.30</i>
<i>Bingo</i>	<i>Village Hall</i>	<i>Thursday 9th 19.30</i>
<i>Rambling Club</i>	<i>Tesco L/B 14.00</i>	<i>Sunday 12th 14.00</i>
<i>Shrove Tuesday (Pancakes)</i>		<i>21st</i>
<i>Ash Wednesday. 1st day of Lent</i>		<i>22nd</i>

Monthly Bus Trips to return of Friday 31 March 09.00 bus to
Leighton Buzzard & 28th April 10.00 bus to Aylesbury

Local Carer Available

For daily and overnight care

NVQ Level 3 Qualified

Btec in Dementia Care

Call Betty on 07739391627

News

A new Aldi bus has been picking up shoppers outside rival supermarkets and dropping them at its own stores.



The shameless stunt saw surprised **Tesco** and **Sainsbury's** shoppers offered a free ride to the nearest **Aldi**.

Aldi bosses organised the cheeky initiative after the budget supermarket was crowned the **UK's cheapest supermarket** by Which? for 2022. To celebrate, special bus stops were placed outside Tesco, Sainsbury's and other supermarkets across Aylesbury.

A branded Routemaster bus, driven by a traditional-style conductor said, 'The gesture was to 'stop other supermarkets taking customers for a ride'.

On boarding the Aldi bus, one Tesco shopper said: "How funny! This has really made my day."

Mentmore Crossroads, Wingrave.

Another incident at these crossroads on the morning of Tuesday 3rd January. A defender swerved to one side and into the ditch.

The morning was cold and the road slippery. One observer said it was a misjudgement of how slippery the road was. Another blamed the lack of signage for the crossroads.



Wild Raven, the farm shop in Rowsham has closed. There has been no official reason for the closure but although very popular with customers, it seems Wild Raven is yet another casualty of the Supermarkets.

The Swan Pub Whitchurch saved from permanent closure



With new management in place, the pub was re-opened on 11th January

A message posted on their Facebook page at the end of December read, 'Thank you to all those who have stood by us for the last 9 years. Massive thanks to our wonderful staff and suppliers'.

The pub was advertised on the Fullers website, to be let on a five year tenancy agreement. At a rent of £39,095 per annum.

Concern at major development in Wing.

I spotted this on the Wing site. There is much suspicion in Wing on development reports and opportunities.

We in Aston Abbots need to take an interest in these plans and suggestions as they may have a

devastating effect on traffic level in our village.

[Roger Carey](#) ·

A targeted, community-focused intervention for Wing!

In amongst all the fuss and bother about traffic relief for Wing (don't say we weren't told that would be an outcome), something may actually be happening.

England's Economic Heartland (the cuddly name for people whose mission is to tarmac over the countryside) have named us, yes *us*, in their December-published Oxford-Milton Keynes Connectivity Study.

They're talking about Placemaking in Wing. It sounds like a harmless activity for the over-70's in Wing Hall on a Thursday afternoon. Placemaking is actually a popular term for some of the dreadful things done to us by architects and town planners. In this case, it's the word used for an activity for which they can't think of any other meaningful name.

The Connectivity Study mentions Wing, in particular, as being worthy of some Placemaking. Under the heading of Highways Improvements on key east-west links, it says:

"Placemaking" identifies locations where there is a need to reduce the impact of an existing road on the quality of life for communities near it. It is likely that solutions will be targeted, community-focused interventions which can potentially be delivered within shorter timescales than schemes of a bigger scale. The nature of the intervention/s required are still to be determined and will be developed in collaboration with partners in all cases.'

Hmm. Reduce the impact on an existing road. So, it's not a bypass. Or a relief road. It could be speed bumps on Church Street, or a Zebra Crossing in Rothschild Road. Or even a footbridge over Vicarage Lane.

Naomi Green, England's Economic Heartland's Managing Director actually visited Wing, to hear our views on traffic, only a couple of weeks before this report was published. It was a shame she had to leave in such a hurry, or she might have had time to mention this potentially beneficial plan.

You can download the full report, complete with some entirely incomprehensible maps done by graphic designers, at

<https://www.englandseconomicheartland.com/.../connectivi.../>

Comments regarding the Placemaking proposal were:

During my career in the private sector, we suffered from the same thing when parasites, sorry consultants, were called in to produce reports and recommendations. If you read through the first couple of pages of this report it's full of the familiar meaningless gobbledegook.

Wing as a village will disappear - just merged into Leighton Buzzard eventually. Aylesbury is already growing closer too.

Oh house building, lose a village, become an urban ghetto.

Thomas the Tank Engine train rides coming to Buckinghamshire Railway Centre

A life size Thomas The Tank Engine is coming to Buckinghamshire



The famous locomotive will be offering a day of fun - including a chance to ride Thomas - at the Buckinghamshire Railway Centre.

A Day Out with Thomas will also give families the chance to ride behind his friend Percy, as well as enjoying sing-a-longs with Rusty and Dusty. There will be plenty of other activities for a trainload of fun.

The experience will be running in Buckinghamshire on various weekends between April and October this year. Tickets for the event at the Aylesbury-based centre cost £19 for adults and £15 for children aged two to 17.

Train rides on Thomas last for 10 minutes. However unlimited rides are available on the day.

Thomas the Tank will be in Buckinghamshire on April 7, 8, 9; June 3 and 4; July 22 and 23; and October 7 and 8. Tickets are on sale now online.

Your Emails

Dear Pete

Allotment holders have complained about dog walkers short cutting across plots on way to the Orchard. Please can I remind people to use the main gate to the allotments and the Orchard gate. Plus please pick up their dogs poo.

Colin

Can any knitters help Please. Battersea Animals Rescue Centre is desperate for knitted mice for the cats coming into their care. There is a pattern on their website you can download. I knitted 20 and sent them for Christmas.

They also are desperate for blankets for the Animals.

If you can help, the animals would be very grateful.

Thankyou **Lyn Clark**

Kirstylou30@yahoo.co.uk

Dear Editor,

Can I kindly ask the presumed allotmenteer who drives a white car, to please avoid parking it near the corner opposite the allotments. It is dangerous and I had a near miss because of it recently.

Regards. **Ian**



"That's not what I meant by 'sit,' and you know it."

Parish Council January

The Parish Council meets again on 28th February, 2023 at 7.30pm in the Village Hall.

Happy New Year to all our residents.

It is wonderful to be able to kick-off the new year with some positive news!

The first bit of good news is that the Parish precept will not increase at all this year. We are confident that having fixed our streetlight energy costs and by increasing our contingency for Playground maintenance, repair and necessary replacement, we have therefore managed our (potentially) biggest outgoings.

The second bit of good news is that we are close to securing funding from the Wing & Ivinghoe Community Board to fully support our purchase of an outdoor Table Tennis Table. The aim is to have this installed in time for the longer daylight and better weather.



Not the actual image

Finally, on the good news front, we have completed demolition and removal of the shed from the Recreation ground. This was beginning to present a health & safety risk and its removal has laid bare a concrete base that we are hoping can be used as the base for the Table Tennis table or another piece of equipment.

The Green

Hopefully by the time this goes to press the leaves will have been swept from The Green

The deterioration of the pavement surface by the Bus Stop continues to be a sticking point between us and Bucks Council. At the last PC meeting it was agreed that the Clerk would seek justification from the Unitary team as to why repairs have not been carried out.

We are delighted that an additional dog waste bin has been installed, although we are waiting for this to be repositioned closer to the existing one. Could we politely remind all our residents that these bins are for use only when walking dogs around the village. Dog waste from your own garden can go into your general dustbin.

Wider village matters

The Parish Council continues to work with our Unitary Councillors and the Local Community Board on generic matters including road repair, pavement repairs and traffic monitoring. The road failure along Lines Hill has been reported and was raised directly to our Unitary councillors at the meeting on 10th January. We have also asked for the roadside gullies to be cleared to help prevent roadside flooding.

For a full set of minutes from each Parish Council meeting please visit the website

<https://astonabbotts-pc.gov.uk/>

And if you would like to contact us please do so through the Clerk clerk@astonabbotts-pc.gov.uk

State of the Fête

Believe it or not, summer is coming up fast -- and with it, our annual fête.

The fête is a huge part of the engine that drives our village. It provides a great opportunity to get to know each other, to enjoy the place we call home.

Crucially, it is also one of our only ways to raise the funds that maintain our past, support our present and invest in our future.

Along with our famous fireworks display, the greater a success we can make of the fête, the greater the potential for our community in the years ahead.

With that in mind, we have two priorities, and two requests:

1. What are your favourite fête stalls, and what could you love to see, make or host?
2. How can we make it easy and fun for volunteers to get involved and meet their fellow villagers?

Let us know: Text, 07929 242739, or email: janet@sewart.net.

We'll be checking in monthly with updates as the journey continues -- but remember, we need you. We cannot do it without you.

You can make a real difference to the future of the village by raising your hand and doing however much or little you can manage.

The future of the fête is in our hands, let's use it to push the village forward!

The Fete Committee.

A collage of various bingo-related items including a red circle with 'B', a yellow circle with '16', a green circle with '11', a blue card with 'BINGO' and numbers 11, 28, 41, 52, 62, a black card with 'B' and '4', a green card with 'B' and '0', and a red card with 'B', '8', and '5'.

Bingo Night

Thursday 9th February

Doors open 7.00pm

Bingo starts 7.30pm

AWESOME
PRIZES
AWAIT YOU!

Aston Abbots Village Hall

In aid of British Heart Foundation

UNSIGNED



LOCAL BANDS AND BEER IN THE NORMAN BRAGG STUDIO



SAT 13 MAY 8PM

DOORS 7:30PM

TICKETS £6 · ON THE DOOR £7

**NORMAN
BRAGG
STUDIO**

The prestigious Waterside Theatre is giving local talent a major stage to perform.

Celebrating the longstanding history of live music in Aylesbury, the **Waterside Theatre** are launching a brand-new band night in their **Norman Bragg Studio**, with the first kicking off on **Sat 13 May at 7.30pm**.

Unsigned will bring together a mix of local bands and genres, giving exposure to emerging talent whilst also providing a stage for well-established local acts to perform in a venue in the centre of town. From pop to rock, acoustic to ska, alt.pop to soul and more, this is

a chance to enjoy the very best of Bucks' live music scene.

Local bands and artists can register interest and sign up by contacting Ali Trimmings.

alisontrimming@theambassadors.com

Line-up to be announced shortly.

Tickets are on sale now and available for £6* when booked in advance and £7 on the door.

Visit atgtickets.com/Aylesbury for a full line-up of events.

THE WRETCHED STEVENS CASE

OLD GAOL HOLDS MURDERER OF LOCAL GIRL BEFORE HIS 1864 EXECUTION IN AYLESBURY

Frustrated in love, William John Stevens murdered Buckingham girl Annie Leeson on Nelson Street by slashing her throat with a razor.

Immediately after the February 1864 murder, Stevens attempted to commit suicide. But he was captured and his life saved. He recuperated in Buckingham Old Gaol for several months. Stevens went on to earn the dubious honour of being the last man to be hanged outside Aylesbury Gaol.

Stevens was a 24 year old Buckingham man who had returned to his hometown after a spell in London that had 'not improved his morals'. Known as Bill, he was a short tailor who worked for the draper Mrs Sarah Ladd, who also owned The Buckingham Advertiser.

Bill dressed nattily, yet Buckingham lasses did not regard him as a prize catch. Bill lived with his father in Nelson Street. Their immediate neighbour was Mrs Elizabeth Leeson, a laundress and a member of the Wesleyans. Mrs Leeson had two daughters. The younger was

Anne (or Annie) who was a pretty 18 year old.

During the week Annie was a servant of Mr James Uff, a single man who ran a grocery and butcher's shop in what is now the Spa shop further along Nelson Street.

Annie was a playful and lively girl. Bill Stevens misread her intentions.

He sent Annie two expensive Valentines in February, 1864. Bill told his fellow tailors of his passion for Annie; they relayed back to him that she treated his attachment as more of a joke than a serious affair as she didn't reciprocate his feelings. Stevens raged with jealousy at the sight of Annie giggling and gossiping with his colleagues. Stevens bought a razor and told his workmates of his intention to cut, threaten or 'do for' Annie. We don't know what Stevens said at home but his moodiness caused his father to confiscate and lock up the weapon. Sadly, Bill recovered it.



What happened next was described graphically in the County Assizes later in the year.

The case started with a moment of levity as a thirteen year old witness, Robert Woolhead, was being cross-examined. Counsel was checking that Robert understood the gravity of speaking under oath.

The boy Robert reported that sometime after 5pm on Saturday 24th February, 1864 he was proceeding out of town along Nelson Street when he saw Annie Stevens collecting water from a pump opposite the churchyard. He followed her - well, she was pretty, he said - and she left the water pail outside her mother's house. A little later, she came out, picked up her bucket of water and headed towards Mr Uff's. Stevens ran after her from the house next door. Woolhead was at the end of Norton Place when Stevens caught up with Annie outside the house on the corner of Tingewick Rd. He went on to describe how Stevens put his arm around Annie's neck and drew something around her throat and she yelled, "Murder!" Stevens ran back to Norton Place and Annie stumbled across the road towards her employer's shop.

Mr Uff took up the story: "I was in my shop that evening when she presented herself to me at the counter with outstretched arms and her throat cut most dreadfully. She did not say anything ... Her throat had hardly begun bleeding ... I ran round the counter, caught her, and

took her into the back room, and held her there until she expired."

Cross-examined, James Uff added, "I know the prisoner. I had heard that he was very fond of the deceased ... I have never seen him with her further than their being at the door together."

Elizabeth, Annie's sister, was next on the stand. "Three or four minutes after she [her sister] had left, I heard a noise in the passage, as if someone had fallen down. I thought the prisoner had got hold of my sister, and I immediately went out and found William John Stevens lying on the stones ...

He was bleeding very much and appeared nearly dead.

My sister and the prisoner kept company together. He said he was very fond of her, and I believe from his manner in saying so that such was the case."

PC Humphrey Ray of Buckingham Borough Police produced a razor in Court that had been given to him by "the prisoner's mother on the 27th February 1864. The razor was covered in blood, and was snatched by Mrs Stevens as the prisoner was lying in the [Norton] passage with his throat cut ... I was employed to watch him. I have heard him say many times over 'My dear Annie,

how could I do it; how could I do it?”

Witness Finch said to Stevens, in front of PC Ray, “Bill, where did you do it?” Stevens had replied, “Against Mrs Spicer’s. [Mrs Spicer lived in the corner house, then a shop, between Nelson Street and Tingewick Rd]. I spoke as civil to her as a man could speak, and she wouldn’t speak to me, but swung about, and then I done it.”

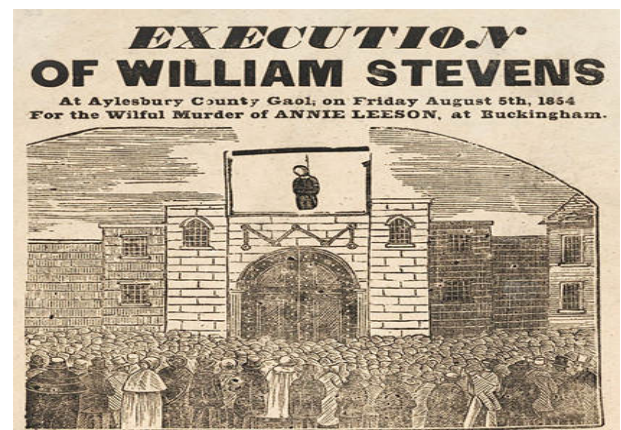
Mr. Robert Death [later De’Ath!] surgeon, said, “I am practising at Buckingham. [His practice was in West Street where his son Dr. George De’Ath was to build Hamilton House] On the evening of the 27th Feb. I saw the body of Ann Leeson, and also the prisoner at the bar. I first saw the prisoner. He was lying in a pool of blood... he had a long wound in his throat. (The prisoner was nearly at death’s door.) I attended him and he recovered under my direction ... I saw the body of the deceased, Ann Leeson, at Mr Uff’s house. I found a cut in her throat ... it extended from one ear to the other and severed all the muscles and major vessels. I consider that was the cause of death.”

The Judge, in refusing a plea of manslaughter, counselled, “... the evidence would not justify the jury in reducing the crime to one of manslaughter. It would be dreadful

if it did so – that because a woman refused a man who was not acceptable to her she should be punished by death.”

After an absence of only 15 minutes, the Grand Jury containing many local gentry returned with a verdict: “Guilty.”

The Judge assumed his black cap and passed sentence of death for wilful murder ‘in an impressive manner’. We are told that the prisoner was removed to the cells ‘apparently less affected than many who were present in Court’.



Stevens was initially too weak to be moved from his father’s house. Throughout his incarceration, Stevens was reluctant to eat or to drink. Later, he became a prisoner in Buckingham’s [Old] Gaol for several months and was attended in his cell night and day by two nurses and two police officers, lest he be tempted, again, to resort to suicide.

Apparently, Stevens showed little or no remorse and he refused to see his mother whom he blamed for all

that had happened to him. During his family's farewell visit, Stevens physically attacked his mother and the warders had to separate them and escort her from the Old Gaol.

The wretched Stevens was the last person to be hanged outside Aylesbury Gaol. The scaffold was built high above the main entrance, and on Friday, August 5th 1864 a crowd of some three thousand people, mainly women and young girls, gathered on a bright, sunlit morning. Stevens, who had earlier joined in loudly in his own funeral service, averted his gaze from the onlookers and muttered "God Help Me," and went quietly to his fate supervised by the expert hangman, Calcraft.

The behaviour of the crowd differed greatly from the ribaldry and jesting that accompanied most city executions. The people of Aylesbury Vale were quiet and reverent; one eyewitness said that "the scene was of a very solemn character". Later, Stevens' body was cut down and buried within the grounds of the Gaol.

Stevens' appalling crime of passion happened over 150 years ago but the affair rumbles on in that part of Prebend End that is the University of Buckingham.



Buckingham Gaol Museum

Stevens, we are told, discussed his fate whilst in Buckingham Gaol and said that he greatly feared being hanged and buried in lime in Aylesbury Gaol. He cursed his slow recovery under the great Dr De'Ath; he'd have preferred to die a suicide in Norton Place and thence to live with his Annie in heaven.

Some University dons believe that Annie, or the spirit of Annie, remains imprisoned in her mother's house. Buckingham University uses the house (28 Nelson Street) as temporary lodgings for visiting lecturers. Visitors report hearing footsteps, sensing movement, feeling a female presence, and an unsettled feeling that they are never alone in the house. The house, especially the ground floor, is so oppressive that many people cannot remain in it for long.

Whether one believes in ghosts, there's no doubt that the ghastly crime of the wretched Stevens continues to haunt this old part of Buckingham.

Willow G.S



Garden Machinery Servicing and Repairs

Based in Aston Abbots, Willow GS services and repairs all makes and models of garden machinery both petrol and electric.



Pedestrian mowers
Ride on mowers
Strimmers
Chainsaws
Multi tools
Hedge trimmers



With collection and drop off free to Aston Abbots and surrounding areas.

Contact Paul on:
07837 421444
paul@willowgs.com
www.willowgs.com



Time to get walking again!

With Spring on its way we start to think about getting out to walk in the beautiful English Countryside again, but where to find new and interesting walks?

Walking in Bucks

<https://www.walkinginengland.co.uk/bucks> has loads of walks to download and print, free, it also has books of walks, details of all the walking groups in the county and much more. Whether you want to walk on your own or with a group all the information is there in one place.

John Harris (who maintains the website) said 'There is so much walking information on the web but it is difficult to find. Walking in Bucks (part of the Walking in England website) has brought it together in one place so whether you are walking from home, or away on holiday, you will be able to find a walk suitable for you'. With walks from half a mile to twelve miles plus long, and a note of suitability for pushchairs and wheelchairs, everyone can find a walk to enjoy.

www.walkinginengland.co.uk
john@walkinginengland.co.uk

Christmas Dinner in Prison

No one would like to go to jail but with all the local newsflashes I receive from local news reporters concerning breakouts at our local prisons including the top security young offenders prison Aylesbury, I also received this:

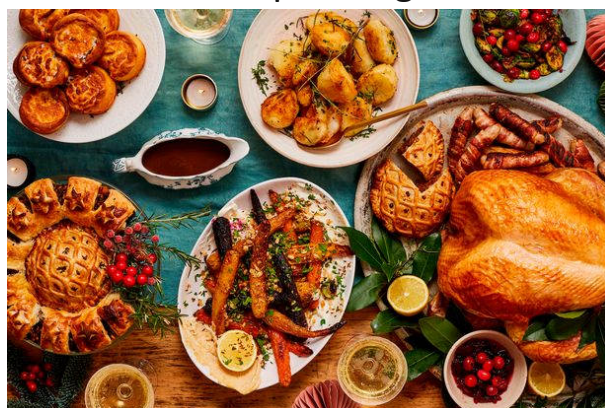
Christmas dinner at HMP Aylesbury.

Mains (served with carrots, sprouts, sweetcorn, roast potatoes, gravy and cranberry sauce)

- Chicken breast
- Three slices of turkey
- Nut roast
- Salmon steak with stuffing
- Chipolata wrapped in bacon

Dessert

- Satsuma
- Christmas pudding & custard.



Forgive me for indulging in politics. Under my Prisons Proposal, no prison would be funded by the taxpayer. Ed!

Aston Abbotts Mobile Hairdresser

COVID-19 SAFE



Covid-19 SAFE

Hi, I'm Sam and have lived in the village for 5 years. I am a freelance hairdresser (He & She) and have been in the business for over 20 years.

If you are looking for a change or can't get to a salon, please contact me on 07800743856 or email:

bowleysamanthat@gmail.com

The Hertfordshire village that should be in Buckinghamshire

Although not everyone would agree we're definitely still staking claim to the village



The Queens Head is the last pub remaining in the village

It's easy to think that Hertfordshire stops somewhere around Berkhamsted when the Chilterns soon become a blurry mix of Bedfordshire and Buckinghamshire.

There's no village further off to one side than Long Marston, which is surrounded in all four directions by Buckinghamshire. The county boundaries snake through from Tring to include the village.

Long Marston historically was seen as an extension of Tring and within the Berkhamsted Union or parishes. That explains why as towns have grown around the village, it proudly remains a part of Hertfordshire.

According to Hertfordshire Genealogy, the hamlet was waste ground at the time of the Domesday Book in 1085, but then grew into a much prettier place to live including its own church. Since 1894, Wilstone and Long Marston joined to become the civil parish of Tring Rural.

It also has some unique history, and it's thought to be where Ruth Osborn, the final accused witch in the UK was drowned, before they then went to the Half Moon in Wilstone. During the Second World War, an airfield was built on farmland bordering Long Marston, Cheddington and Marsworth which was operated by both the RAF and US Army Air Force.

Its location meant Tring was hit by a number of bombs during the war, although not significantly damaged - although in Long Marston a bomb destroyed a school and is thought to have killed a teacher. According to Tring Local History, Long Marston had air-raid shelters built on Tring Road and Station Road because of the risk of being hit.

Today, that primary school has been rebuilt as Long Marston JMI. There's also just one pub remaining, the Queen's Head right in the centre of the village. It also boasts a cricket club, tennis club

and community centre, so everything that a quaint country village needs.

However, if you choose to live somewhere so quiet and so small, there are some downsides - including the fact there aren't any supermarkets or convenience stores, so you'd have to get used to nipping to the next town for milk. **And we know all about that!** However, that doesn't dissuade buyers from moving to the village for a taste of the country.

The average house price is £500,000 according to Zoopla. It's an ideal stopping point on a walk between the villages of Bucks and Herts.



However, big changes are coming to Long Marston with the planned Market Village I reported on a few months back.

Did you know the New Rules from 2023

Several new laws and rules were announced or came into force in 2022, but some are little-known by drivers. They include:

Speed limiters: All new cars must now be supplied with a speed limiter, which restricts engine power and thus the speed of the car. This does not override the motorist's responsibility to drive within the speed limit.

Mobile phone use: A major change during 2022 was the introduction of stricter mobile phone rules, which mean drivers should never hold and use a phone, tablet or sat-nav for any reason while driving or riding a motorcycle, even if stationary at traffic lights or in a queue.

Exceptions include when calling 999, when safely parked, or when using a phone to pay while in a drive-thru queue.

Electric car tax: In 2022, electric car drivers were told they would have to begin paying road tax from April 2025, though in the first year they will go into the lowest bracket, which is expected to cost £10. From 2026 most will pay the standard rate, of £165. Owners of cars costing £40,000 or more will pay an additional charge of £355.

And if you are learning to drive

In the year to March 2022, the top 10 most common reasons for failing a driving test were:

1. Not looking properly at junctions
2. Failing to check mirrors when changing direction
3. Poor road positioning while turning right onto the road at junctions
4. Mistakes at traffic light signals
5. Poor steering control
6. Not pulling away safely from the side of the road
7. Reacting incorrectly to traffic road signs
8. Poor road positioning during normal driving
9. Responding incorrectly to road markings
10. Making poor progress and driving at the appropriate speed

According to the latest statistics, the pass rate for driving tests so far this year stands at just under half (48.7%).



"How can I concentrate on my driving test, if you keep screaming like that?!"

LONGMOOR Garden Maintenance



Regular mowing & strimming
Hedge trimming
Garden tidy-ups
Pressure washing
Seasonal clearance
Green waste disposal

Contact Max to discuss
your requirements

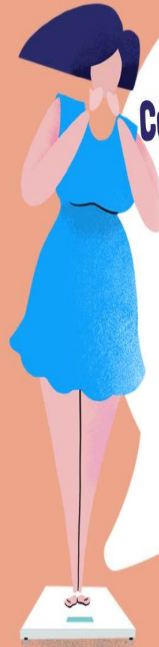
07949 508584

gardens@longmoormaintenance.co.uk

THE 1:1 DIET

by Cambridge Weight Plan

This
one
works!



I'm a 1:1 Diet
Consultant, based in
Aston Abbots

Private weekly weigh ins
Free consultations
Daytime or evening
appointments
1:1 support
Flexible plan to suit your
lifestyle

Charlene Leeder
07415717067

#One2OneDietChallenge

Painting & Decorating

Brighten your Home with a Professional Decorating Service

Clean & Tidy Workmanship Guaranteed



To Discuss Your Idea's & Arrange

A Free Quote Contact: Adrian



Tel: 01296 688429

Mobile: 07986 597013

E-Mail: bystra@btinternet.com

Church Matters

February

COMING UP

Quiz: Saturday 4 March, 6.30pm, village hall, in aid of church funds. Admission £12 to include hot supper. Another great evening of challenging questions from team vicar Andrew Krauss. Book a table or individual tickets – contact Caroline Lane or any PCC member.

Services: a warm invitation to anyone to come along to a Sunday service. We normally have four services a month: two 10.30am services (with communion for those who are confirmed in the Church of England), one 6pm traditional evensong, and one 10am All Ages service (breakfast in the village hall before the All Ages service). They are all open to anyone. Three of the services are taken by a member of the ministry team, while the All Ages is lay led (usually by Caroline Abel Smith and Ro Knight) and is very informal. Come and see!

LAST MONTH

Jumble sale – thanks to all who donated their jumble and attended to buy! We raised over £250.

Services – the Breakfast and All Ages service on 15 January, which was very well attended, was hopefully enjoyed by all! It seems a long time ago, but the Carol and Christingle service by candlelight, for which we had a Nativity enactment with a large backdrop slung across the chancel step, was lovely; the greenery, lights and stars in the church porch were something special (thank you Francesca for organising all the church decorations with your sister and Jane Copping).

Christmas donations to villagers – As a result of hearing about the Church giving small donations to needy folk in the village at Christmas a villager, who wishes to remain anonymous, generously donated cash and also two handsome hampers which we delivered just before Christmas to a family and an older resident. We invited anyone in need of a little extra cash to apply for a donation from our Hardship fund and there are still funds available so please, if you still need help now, don't feel embarrassed, it is there for the asking and you can contact our Churchwarden Caroline Abel Smith (details below) in complete confidence.

Church opening hours - Anyone, churchgoer or not, is welcome to use the church for quiet reflection

and/or prayer. It's now locked outside service times, but either Caroline will be happy to let you in (see below for contact details).

Caroline Abel Smith,
churchwarden (The Old Vicarage,
01296 681001,
cbjlas@talk21.com)

Caroline Lane, PCC secretary (2
Church Row, 01296 681373,
carolinelane@btinternet.com)

PCC members: Anita Parker, Lesley Clough, Ro Knight, Ann Goodman, Annie Pettie; Andy Bystra (fabric); Tatiana Butler and Francesca Bean (finance).

100 Club Draw January

1st (£50) June Cox

2nd (£10) John Abel Smith

QUIZ EVENING

6.30pm, Saturday 4 March, Village Hall

In aid of St James's Church

Quiz set by Andrew Krauss, Team Vicar

Hot supper (catering by Francesca), quiz and raffle

Book your table (max 6) or make up a table on the night

£12 per head (bring your own drink)

Tickets on sale now - contact Caroline Lane, 01296 681373

email carolinelane@btinternet.com

or ask any member of the Parochial Church Council

This is the charity Quiz Night

Services at St James's Church - Aston Abbotts

5 February	6.00pm	Evensong
12 February	10.30am	Parish Communion
19 February	9.30 breakfast 10.00am	Village hall All ages, Church Service
Ash Wednesday 22 February	No service here Services with communion	10.00am Wingrave 8.00pm Cheddington
26 February	10.30am	Parish Communion

Review of Swan Lake



Nerubashenko Ballet (touring ballet company) with a full orchestra brought Tchaikovsky's Swan Lake to the Waterside Theatre. I Was looking forward to seeing this for a second time.

Swan Lake tells the love story of Prince Siegfried and a Swan Princess called Odette. Under the spell of an evil sorcerer Von Rothbart, Odette spends her days as a swan swimming on a lake but by night she becomes a beautiful woman.

It is performed over four acts. From the start, I really got enticed into the story and was gripped when this was told over the duration of the four acts. The Orchestra were powerful throughout and playing some

fascinating music finely tuned in with the story and choreography. You couldn't miss anything, not even a blink of an eye. The dancers were highly energetic and unique, and the main characters Prince Siegried and Odette performed the story beautifully. You needed to understand the plot before watching the story.

This was an incredible experience to watch again and when the story came to a close, the applause by the audience continued for a while. A fantastic evening and I would recommend this to anyone who has never seen a ballet before.

Ian Duffy



"I agree, Mr. Richards, there is a special bond between a man and his dog, but could you at least try and see why Mary has a problem with it?"

6 warning signs of bowel cancer that shouldn't be ignored according to Cancer Research UK

Sadly, in the UK, there are 42,886 new cases of bowel cancer diagnosed every year and 16,808 deaths. According to [Cancer Research UK](#), nine in 10 new cases develop in people over 50, and six in 10 in people aged 75 and over.

It's important to remember that bowel cancer doesn't always show obvious symptoms – especially in its earliest stages – which is why taking part in screenings is so important.

However, there are some things you can look out for and that should be discussed with your doctor.

These may include...

1. A persistent change in bowel habits

[According to the NHS](#), a persistent change in bowel habits (that lasts longer than three weeks) is the

most common symptom of bowel cancer. For example...

- pooing more often and passing stools that are runnier and looser
- increasing constipation
- passing narrow, pencil-thin or ribbon-like stools
- alternating bouts of diarrhoea and constipation

2. Blood in the stools

3. Constant pain in your tummy or back passage

If pain is felt during bowel cancer, the site of the pain can vary – but it's often described as a vague discomfort or dull ache around the areas of your tummy and/or back passage. Pain may be intermittent or constant and may be provoked by eating, affecting appetite.

Persistent bloating, gas, and swelling of the tummy can also be signs of bowel cancer.

4. Feeling that your bowels don't empty fully

The presence of a tumour in the bowel can lead to the feeling that your bowel won't empty completely. This can be uncomfortable and you may feel a constant urge to go to the toilet.

5. Weakness or excessive tiredness for no obvious reason

Fatigue is one of the most common symptoms of bowel cancer but it's often overlooked.

If polyps or tumours bleed into the digestive tract, the loss of iron over time can cause iron-deficiency anaemia – the symptoms of which are often weakness and/or excessive tiredness.

6. Unexplained weight loss

When it comes to bowel cancer, unexplained weight loss isn't as common a symptom as some of the others in this list – but it's important to speak to your GP if you've lost weight and you don't know why.

Because bowel cancer can cause pain, gas, bloating, and swelling of the tummy, you may not always feel like eating, which can affect your weight.

if you have any of these symptoms or you just don't feel right, you should [make an appointment with your GP](#).



ANDERTON ELECTRICS

Keeping you wired up

- ✓ Free quotations, no obligations
- ✓ Emergency Work – day or night
- ✓ Domestic or Commercial
- ✓ A name you can trust

FREE NO
OBLIGATION
QUOTATIONS

Dunstable - 01582 343 123

Tring - 01442 824 740

Mobile - 07771 698 151

Email: james@andertonelectrics.co.uk

Checkatrade.com **See our feedback on Check a trade**

www.checkatrade.com/andertonelectrics



City & Guilds



www.andertonelectrics.co.uk

THE NOMADIC KITCHEN.



London trained local chef

Bespoke private catering

One to one cookery lessons in the comfort of your own home

Gain confidence in the kitchen or learn a new cuisine

Email: sarahleary@sky.com Mobile: 07769 730946

Advertise to our readers

Annual Full Page Inside	£100
Annual Half Page Inside	£60
Annual Quarter Page	£40
One Offs Full Page	£25
Half	£15
Quarter	£10

Contact John Whyte 07988001834

Deadline for Chronicle contributions is the 24th of each month. Please send articles

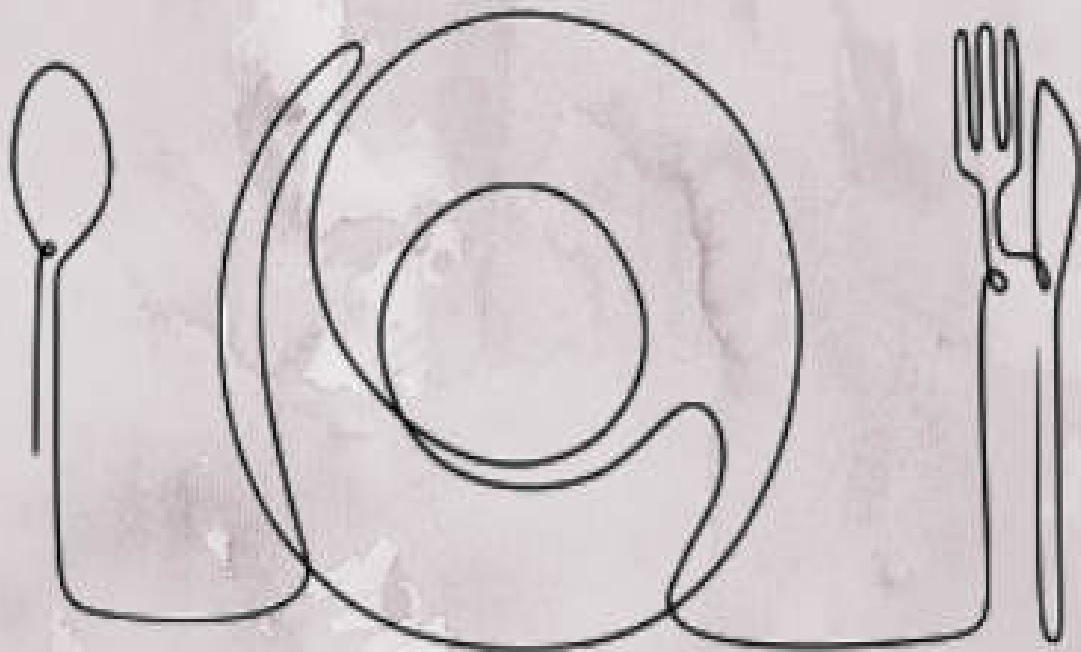
to: editor@aachronicle.co.uk

The Unicorn

2 FOR

TUESDAY

- 2 COURSES FOR £14.95 -



EVERY TUESDAY LUNCH 12-2PM
PLEASE BOOK TO AVOID DISSAPOINTMENT
CALL US ON 0296681261 OR EMAIL US
THEUNICORNCUBLINGTON@GMAIL.COM



ALLOTMENT DIARY



When I first started storing potatoes from my allotment to use during the winter, I quickly discovered that if the temperature got below freezing for a few days, the stored potatoes froze, and then when they thawed out, turned to mush. They also oozed a dark liquid, and gave off a nasty smell, and were totally inedible.

However, I discovered that one could prevent this by covering the containers where the potatoes were stored with roofing insulation, and, for example, old duvets and the like, which stopped them from freezing. This worked very well, and most years I lost very few potatoes. However, last December I got my come-uppance. You will remember that we had a very cold spell which lasted for a week or more, during which the temperature at night sometimes got down to minus 10 degrees, and it was not getting

above freezing point during the day. Stupidly, I did not think about my potatoes: had I done so, I could have temporarily brought them into the house until the cold spell had passed. When I got to look at my stored crop after the cold spell had finished, I discovered that about a quarter of them had clearly already been affected, and although I brought the remaining potatoes into the house, within a week or so it became apparent that another 25% were affected.

All in all, I lost at least half of my crop, which is very frustrating. In particular, I had dug up a very large crop of a maincrop variety called Cara at the beginning of December: I would have done much better to have left them in the ground, where the frost would not have got them.

I have also been experimenting with an old gardeners' way of storing potatoes, which is to store them in a "clamp" on the allotment. What one does is to pile the potatoes in a long pyramid, and then cover them in straw and soil. I did not have any straw, and have constructed a small clamp, using instead the woven plastic material which is sold with which to cover bare earth, in order to prevent weeds from growing, while allowing rain-water to penetrate. The

problem is that one cannot easily look at one's potatoes to see how they are doing; and I do not yet know how successful the experimental clamp I have built has been.

Curiously, I still had a few carrots on my allotment, still waiting to be dug up, and these have been totally unaffected by the sub-zero temperatures.

Peter Shorrock



**THAMES VALLEY
POLICE**

Your area is covered by

The Wing & District

Neighbourhood Policing Team

Charlotte Cottage, 73 Leighton Road, Wing, LU7 0RD

To contact a member of the local team, please email the below email address:

✉ greatbrickhillwingivinghoenhpt@thamesvalley.police.uk

To report a non-urgent crime you can visit www.thamesvalley.police.uk

Or

☎ Telephone : 101 to speak with an operator

In the event of an emergency always dial 999

Events in the month of February

February 3, 1959 - Rock singers Buddy Holly, Richie Valens and the Big Bopper died in a plane crash.

February 4, 2004 - Mark Zuckerberg creates Facebook social media platform.

February 11, 1929 - The Vatican becomes a sovereign nation.

Feb 11, 1975. Margaret Thatcher became the first female leader of the Conservative Party

February 14, 1931 - The original film "Dracula" starring Bela Lugosi is released.

17th 1971 The UK began Decimalisation

February 18, 1930 - A ninth planet is discovered in the solar system and is named Pluto.

February 20, 1962 - John Glenn became the first U.S. astronaut to orbit earth.

February 23, 1874 - Walter Wingfield of Pimlico, England, patented the game of lawn tennis.

February 26, 1993 - A bomb explodes at the World Trade Center killing 6 people.

February 26, 1983 - Michael Jackson's "Thriller" album is #1 on the charts and stays there for 37 weeks.

February 28, 1692 - The Salem Witch Hunts begin. Originally from Aston Abbots. **Ed!**

Merry Christmas & Happy New Year from Travel Impressions

If you need help and advice planning your next holiday,
we will be extending our opening hours in January to include
every Saturday from 9am-1pm.

Come in for a chat over a coffee!



Travel Impressions 

01442 890265

enquiries@travelimpressions.co.uk
www.travelimpressions.co.uk

Suite 4, George House, 64 High Street, Tring, Herts. HP23 4AF

Parrott Brothers Butchers Whitchurch

Local Quality Butchers

Beechmoor Farm, Whitchurch, HP22 4LG



Opens 7AM Tuesday to Saturday. 01296 641207



The Big Walk

Step up and make a difference

Walk for Pace and make a huge difference to our inspirational children, who face mobility challenges every single day.



**22nd
April**

Three routes:
18, 12 and 6 miles along
the infamous Ridgeway.

Sign up today at
thepacecentre.org/event/the-big-walk/



Email kelly.houghton@thepacecentre.org thepacecentre.org [f](https://www.facebook.com/thepacecentre) [t](https://twitter.com/thepacecentre) @thepacecentre

Registered office: The Pace Centre Ltd, The Bradbury Campus, 156 Wendover Rd, Aylesbury, HP22 5TE | Company number 2707807 | Registered Charity No. 1011133.



Registered Charity number 1151925



Happy Chinese New Year Welcome to the Year of the Rabbit



Welcome All

This wonderful local resource is

FREE

Not just books - your library card gives you access to a wealth of **FREE** online resources - including magazines and newspapers

Fines Amnesty January & February

If you or your children have fines already on your library cards, these will be waived; and no fine applied to items returned late.

Opening Times

Tuesday 1400 - 1630

Wednesday 1000 - 1230

Friday 1400 - 1630

Saturday 1000 - 1230

Remember the other services we offer in the library:
photocopying, printing,
laminating, shredding,
small change & stamp collection

Library Elf

Never forget to return an item again - register here for a **FREE** email reminder

<https://www.libraryelf.com/base/Signin.aspx>

Join the library here

www.buckinghamshire.gov.uk/libraries/library-membership/join-library/

to access the library catalogue and **FREE** online services



Find us here: [f@wingcommunitylibrary](https://www.facebook.com/wingcommunitylibrary) [t@wing_library](https://twitter.com/wing_library)



Who's Who ?

Chronicle Editor Pete Lucas 01296 681387. 07544227991

Chronicle Advertising John Whyte 07988001843

Chronicle Distribution Sally Palmer/Jill Wenble 681152/681877

Parish Council Chair Jane Baylis 01296 681042

Councillor Trevor Hall

Richard Lakin

Councillor Sally Palmer 681152

Councillor Marisa Abel Smith

Councillor Heather Langdon 01296 688946

Councillor Jane Plested 01296 681740

County Councillor Peter Cooper

Vicar Revd Howard Robson 01296 688593

Church Warden Caroline Abel Smith 01296 681001

Church Secretary Caroline Lane 01296 681373

PCC members: Caroline Abel Smith (churchwarden), Caroline Lane, Anita Parker, Lesley Clough, Ro Knight, Ann Goodman, Annie Pettie, Andy Bystra

Pop up Pub & Quiz Night. Pete Lucas 07544227991

Book Club Sally Palmer 01296 681152

Village Hall Hire Nigel & Sally Palmer 01296 681152

Men's 630 Club Andy Bystra 01296 681690

Women's Gnomes Club Carol Spooner 01296 681544

100 Club David Gray 01296 681952

Bingo Pam Dixon 01296 681626

Rambling Club & Whist Drive Colin Higgs (BEM) 01296 681343

Orchard Gordon Smith 01296 681373

Community Services

Post office & shop Wingrave Deva 01296 682964

Baby & Toddler Group Kim Gayler 01296 681123

NHS Direct 24hr Advice 111

Doctor Out of hours Surgeries 01296 331511

Stoke Mandeville Hospital 01296 315000

Police Non-Emergency 101

Buckinghamshire Council 01296 395000

Citizens Advice 08701264056

MP Greg Smith (Con) 01296 714240

Anglian Water 01296 385995

Pre School Wingrave 01296 681127

Wingrave School 01296 681436

Cottesloe School Wing 01296 688264

Wingrave February Diary

- Wed 1 1000 WI: Go Beyond
Talk Methodist Church
- Sat 4 Quiz night:
Malawi World Challenge
Wingrave Park
- Sun 5 1230 Swingrave dance
Community Centre
- Sat 11-12 Wingrave
Singers at Chelmsford Cathedral
- Mon 13-20 School half
term holiday
- Mon 13 1500 Friendship Group
Baldway Ho, Leighton Rd
- Wed 15 1800 Copy deadline for
Communiqué
- Fri 17 1930 Family Bingo
Community Centre
- Tue 21 1430 Wild Slow Walk: a
Wingrave wander Village
Green
- Fri 24 1930 WwRHA talk: Two
Georgian houses, West Wycombe
& Ashridge Community Centre

Wingrave Art Club



Every Tuesday evening the scratch of charcoal, the slosh of watercolour, the slap of acrylic, the tearing of paper or the gentle tones of pencil can be heard at the Methodist church. Members of Wingrave Art Club are in action!

We are an art club open to all whether you are totally new to art, a bit rusty or a regular painter. Every Tuesday evening there is a theme which is always optional. They are very varied and always enjoyable. We meet 7.30-9.30pm

We are an untutored club but share ideas and learn from each other. Occasionally we have a visiting tutor.

If you are interested in joining the art club or coming along to a session, please contact me.

I also keep a list of 'daytime only' people as there are occasional daytime tutored workshops. Please contact me if you would like to be on this list.

Jane Muir

Janefdmuir@btinternet.com

01296 681513

07905393220

Cheesy Garlic Butter Mushroom Stuffed Chicken



Ingredients:

- 2 boneless skinless chicken breasts
- 4 ounces cream cheese, softened
- 8 ounces sliced mushrooms, boiled or steam
- 2 tablespoons garlic butter
- 1/2 cup shredded mozzarella cheese
- Salt and black pepper
- Fresh parsley, chopped

Instructions:

1. Preheat the oven to 350 F.

2. Butterfly each chicken breast and season with salt and pepper.
3. In a medium bowl mix together the cream cheese, mushrooms, and garlic butter until combined.
4. Stuff the chicken breasts with the cream cheese mixture and place on baking sheet lined with parchment paper.
5. Sprinkle the tops of the chicken breasts with the mozzarella cheese.
6. Bake the chicken in the oven for 25-30 minutes, or until the chicken is cooked through and cheese is melting.
7. Garnish the chicken with fresh chopped parsley and serve.

Enjoy!

Coming soon to a street near you!

Street golf



***Neil Redding. Thank you. Keep them coming.
Until Next time...***

